

Specification

Speed of label applicator

- Up to 40 mts. per minute with maximum roll width and diameter
- Up to 64 mts. per minute with reduced roll widths and diameters

Rate of application

- For Wipe-on and Blow-box up to 600 labels per minute (depends on length of label)
- For Tamp application, up to 120 labels per minute (depending on length of label and the tamp travel)

Width of label Wipe-on

- 20 to 120 mm, with the standard dispensing tongue. Minimum width of label 7 mm/min. (With the milled tongue option.)

Label sizes (mm) for applicators*

	min.	max.
Tamp-blow	20 x 20	120 x 160
Tamp-on	20 x 20	120 x 120
Blow-box	20 x 20	110 x 110

*according to label quality, a.m. label lengths are to be restricted. Larger or smaller labels can be realized with special applicators (individual test necessary).

Length of label Wipe-on

- 12 to 500 mm, optionally to 2500 mm

Label break (gap)

- 3 mm min.

SPS Connection

- Voltage free contacts, for the status check by a PLC (standard)
- READY/ALARM
- Applicator BUSY (label dispensed or being dispensed)
- End of label signal (optional sensor)

Label Roll Unwind

- Outside diameter 300 mm max., outside winding preferred, inside winding possible
- Core: 76 mm (3") diameter preferred, 40 mm diameter core possible

Label Carrier Rewind

- Up to 170 mm diameter (equals 450 metres) if using standard carrier tape (57 mm)

Weight

- 22 kg (dependant on version)

Power connection

- 115/230 VAC, 50/60 Hz

Operating Environment

- Temperature 10° to 38° C, 10 to 95% relative humidity, non-condensing

Product detection

- Optionals: light barrier, reflectiv sensor capacitive or inductive sensor, any NPN or PNP type with M12 connection

Compressed air connection

- (Only for Blow-box and Tamp-blow applicator) 200 L per minute at 6 bar, the compressed air must be clean, dry, and free of oil

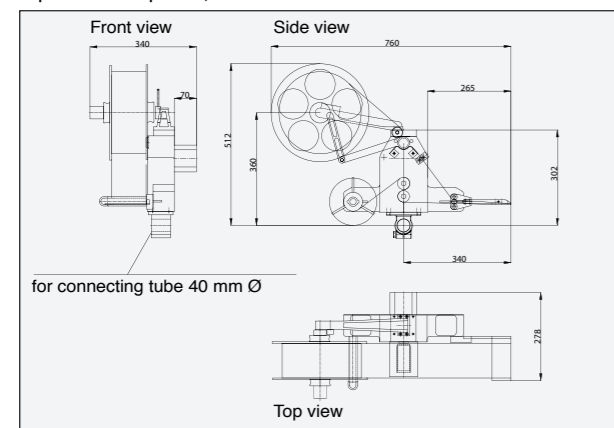
Dimensions Controller-box

(H x W x D) 75 x 255 x 205 mm

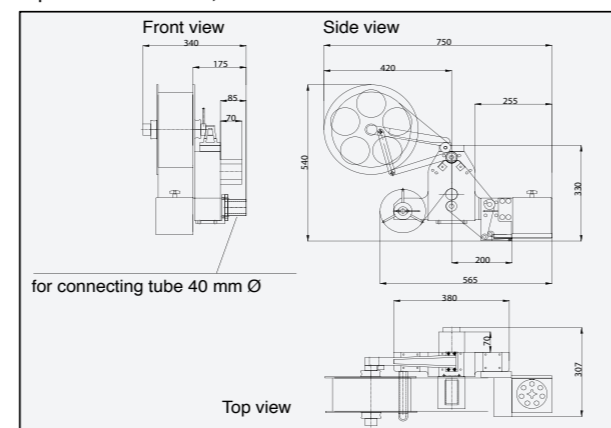
Options

- Product sensor
- Sensor for low label warning
- Warning light 1- or 3 colours
- Applicator with tamp-pad
- Sensor for variable stroke
- Blow-box applicator, with pluggable nozzles to suit the size of label
- 90° rotary applicator for face-side labelling
- mandrel-adjustable tripod

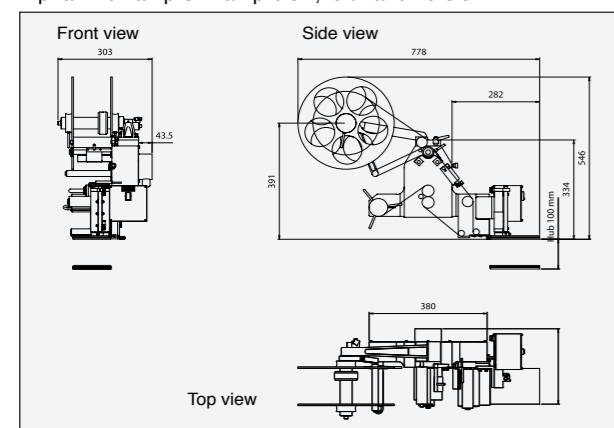
Alpha V40 Wipe-on, left hand version



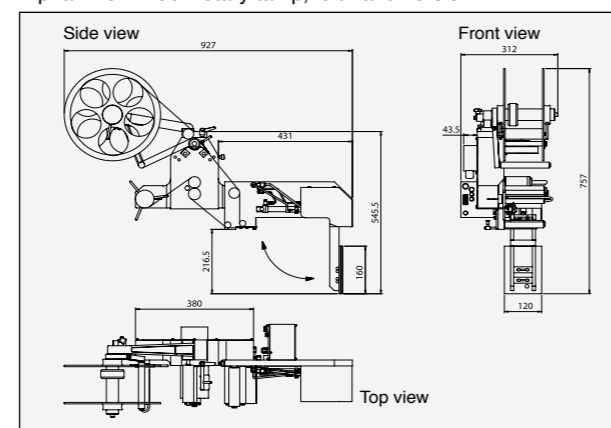
Alpha V40 Blow-box, left hand version



Alpha V40 Tamp-on/Tamp-blow, left hand version



Alpha V40 TB 90° rotary tamp, left hand version



Subjects to technical alterations at any time.

Geset
— A Weber® Company

Fully automatic labeling of products and packaging using pre-printed labels

Label Applicator Alpha V40



Label Applicator Alpha V40

The new Alpha V40 is an automatic, all purpose label applicator for quick, dependable, trouble-free labeling of a broad range of products and packaging.

The new display controller has many new functions as standard. For example, as many as 30 label formats can be stored in the memory. You can change over to other label formats quickly as the memory contains all required information. For example: Length of label, application speed, opacity and placement of label. The system does not have to be calibrated. This saves time, and avoids risk of handling mistakes. The liquid crystal display is backlit, and incorporates a label counter. The functions of the sensors are always displayed on screen in real-time. The current application speed is indicated as metres per minute; it may be adjusted while the applicator is still in operation.

Any problems are indicated by a display message. You can select various languages on the display dialogue. Voltage free contacts are provided for connection to the PLC. In case of a missing label on the web, an automatic compensation is made which prevents double labeling or missing a product.

A number of control profiles for the applicator are resident in the Alpha V40 controller, which can be selected from the display. The advantage of this is

the fast and easy changing to other applicator types, without the need to change the control system. The controller backup function (option) enables you to copy all variables (e.g. label parameters) simply and reliably, via the serial interface to a back-up controller.

You are free to configure the sensor inputs, all usual sensor types (e.g. photo sensors with NPN- or PNP-outlets) can be connected using an M12 cable.

By using the "trigger delay function", the exact positioning of the label can be controlled without the need to adjust or move the product detection sensor.

Products of irregular shape may cause unwanted multiple trigger signals, they can be masked out. Options, such as shaft encoder, warning lights, sensors, etc., can be retrofitted simply by Plug & Play.

The Alpha V40 is available in the following versions: Wipe-on, Tamp-on, Tamp-blow and Blow-box.

This means that the requirements of most labeling applications can be met, with one modular system. The system is supported by its own cast aluminium casing, rendering it resistant to distortion. The centralised suspension of the dispenser tongue (Wipe-on version) allows automatic adjustment for any change in the height of the products, without causing a mismatch of length in the label field.



Alpha V40 Wipe-on with controller box, in left hand version

In the **Wipe-on** version, the labels are peeled off from the carrier, and applied to the product/packaging by a precise stepping motor. With the **Tamp-blow** version, the dispensing tamp travels over a linear system to the product by a pneumatic drive.

Another version of the tamp-blow system pivots the tamp pad by 90° rotation to the face- or backside of the product. The label is blown onto the moving or stationary product, with no physical contact.

- The contact less Tamp-blow method offers important advantages;
- No wear in the region of the tamp,
 - Can be fitted to any direction of conveyor,
 - Products can be labeled "on the move",
 - Applies labels to sensitive and irregular-shaped surfaces,
 - No start-stop synchronisation with the conveyor is required.

The basically provided blow-on function guarantees a sure label application also onto uneven and arced surfaces. The **Tamp-on applicator** is spring-mounted and presses the label onto the surface of the slowly-moving or stopped product. Preferred use: Difficult surfaces, for example sawn timber/wood. With the **Blow-box applicator**, the label is blown straight on the passing product using a strong air jet (no contact). This allows the applicator to achieve very fast cycle times.

The distance from the blow-box to the product must be between 6 and 20 mm to ensure accurate label positioning. No matter what the method may be, the products are labeled precisely and quickly. The accuracy of placement is up to ±1 mm.

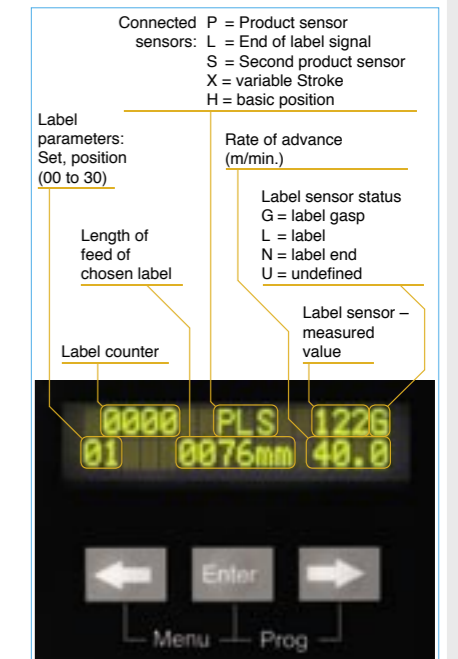
Keeping the applicator and its control system separate makes for a smaller-sized machine, and greatly facilitates the integration into existing production lines. The applicator may be converted from a right-hand to a left-hand version, thanks to the symmetry of the design. This provides the maximum degree of flexibility.

The compact applicator can be installed in any required position. The applicator has removable guide rollers which allow easier handling and cleaning.

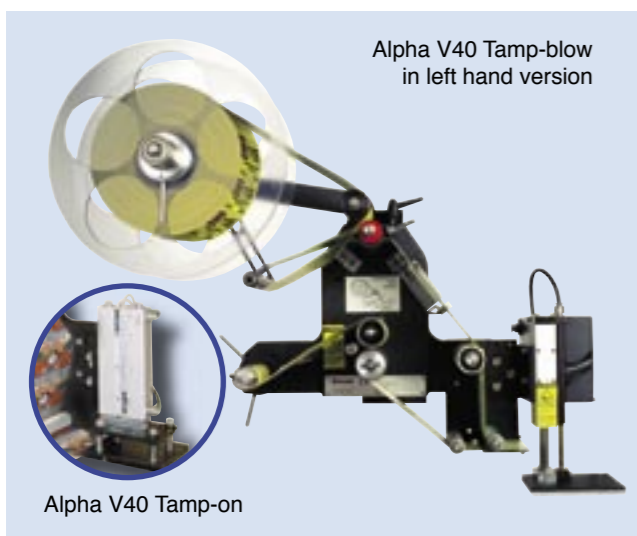
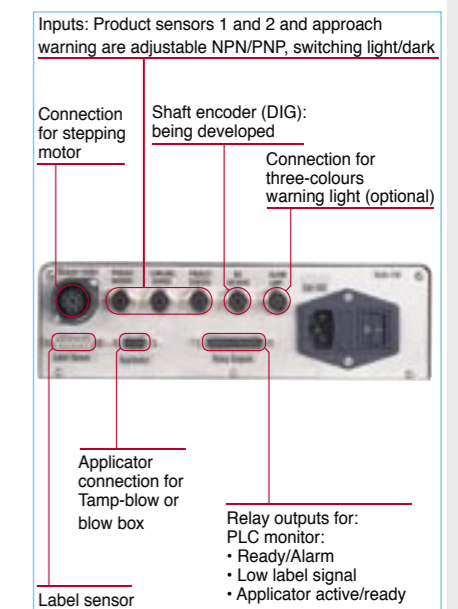
A full roll of labels can be changed in approximately 30 seconds. The robust design of the system guarantees reliable operation in continuous production. The Alpha V40 can be supplied fitted with special-type applicators with tamp-blow, blow-box, and other options for all-round and precision labeling.

Complete special labeling systems incorporating techniques for handling the product in special applications are obtainable, on request.

Alpha V40 Controller Display

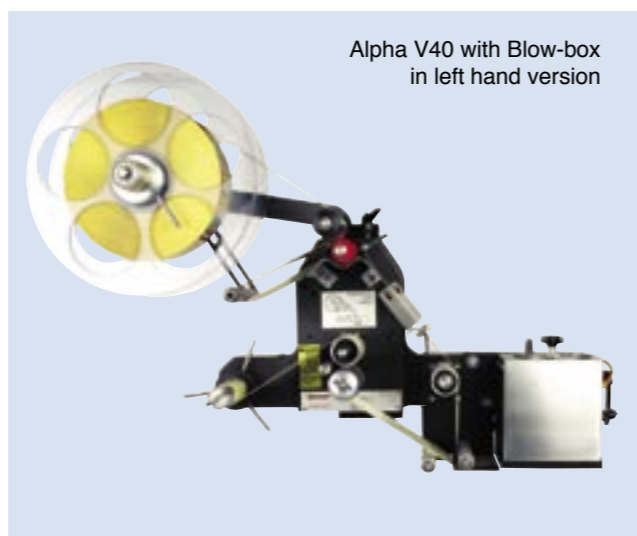


Alpha V40 Controller back

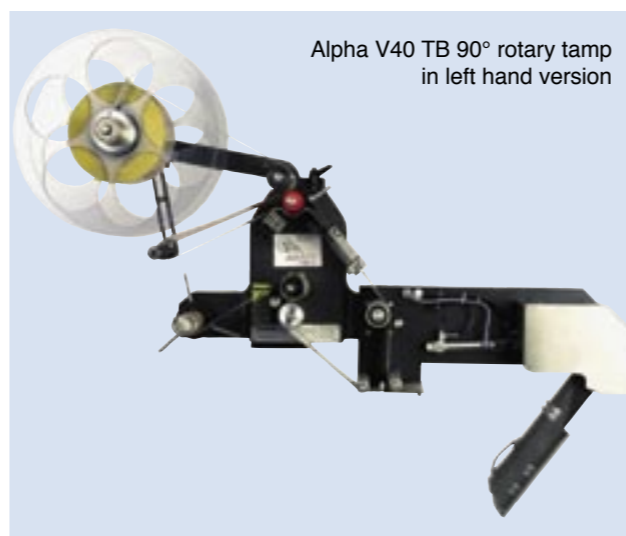


Alpha V40 Tamp-blow in left hand version

Alpha V40 Tamp-on



Alpha V40 with Blow-box in left hand version



Alpha V40 TB 90° rotary tamp in left hand version